



# AMERICAN LEVERSETS

SIGNATURE



**Colonial (4900)**



**Alessa (8300)**

DESIGNER



**Churchill (5000)**



**Chesterfield (1700)**



**Hampton (4000)**

CLASSIC



**Chiltern (1600)**

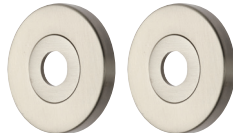


**Chester (2000)**

ROSE AND PLATE



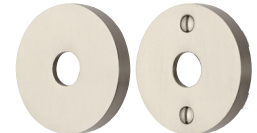
**RE**  
2 1/2" x 2 1/2"



**AN**  
2 3/8" Dia.



**TA**  
2 3/8" Dia.



**BA**  
2 1/2" Dia.



**BL**  
2 1/2" x 2 1/2"



**BR**  
2 1/2" Dia.



**BG**  
2 1/2" x 2 1/2"



**BT**  
2 1/2" Dia.



**SQ**  
5" x 2 1/2"



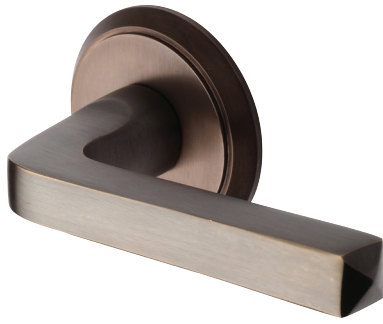
**SE**  
11" x 2 1/2"



**SR**  
7" x 2 1/2"

## SIGNATURE AMERICAN LEVERSETS

COLONIAL 4900, ALESSA 8300



A



B



C



D

- A. **Alessa Lever (8300)**  
**with BR rose**  
in Venetian Bronze (6)
- B. **Colonial Lever (4900)**  
**with AN rose**  
in Polished Chrome (9)
- C. **Colonial Lever (4900)**  
**with BL rose**  
in Polished Nickel (4B)
- D. **Alessa Lever (8300)**  
**with RE rose**  
in Dark Oil Rubbed (8)



# DESIGNER AMERICAN LEVERSETS

CHURCHILL 5000, CHESTERFIELD 1700, HAMPTON 4000



A



B



C



D



**A. Churchill Lever (5000)**  
**with TA rose**  
in Dark Oil Rubbed (8)

**B. Hampton Lever (4000)**  
**with AN rose**  
in Satin Nickel (4)

**C. Hampton Lever (4000)**  
**with AN rose**  
in Venetian Bronze (6)

**D. Chesterfield Lever (1700)**  
**with TA rose**  
in Polished Brass (3)

# CLASSIC AMERICAN LEVERSETS

CHESTER 2000, CHILTERN 1600



A



B



C



D

A. **Chester Lever (2000)**  
**with TA rose**

in Venetian Bronze (6)

B. **Chiltern Lever (1600)**  
**with TA rose**

in Polished Brass (3)

C. **Chiltern Lever (1600)**  
**with BT rose**

in Polished Nickel (4B)

D. **Chester Lever (2000)**  
**with BT rose**

in Dark Oil Rubbed (8)

