

# Cabinet Hardware



# CABINET KNOBS



Disc knob has a flat top

Item	Dia.
MT3880-032	1 ¼"
MT3880-038	1 ½"



Item	Side to Side
MT4334-036	1 ¼"
MT4334-043	1 ½"



Item	Length
MT4465-032	1 ⅞"

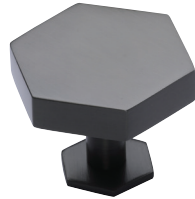


Item	Dia.
MT3672-032	1 ¼"



Disc knob with knurled edge

Item	Dia.
MT3884-032	1 ¼"
MT3884-038	1 ½"



Item	Side to Side
MT4335-036	1 ¼"
MT4335-043	1 ½"



Item	Dia.
MT4553-040	1 ⅞"



Item	Dia.
MT0333-032	1 ¼"



Disc knob with rose

Item	Dia.
MT3885-032	1 ¼"
MT3885-038	1 ½"



Item	Length
MT4670-044	1 ¾"



Item	Dia
MT3850-020	1 ⅜"



Item	Length
MT2232-035	1 ⅜"



Tayo knob has convex top

Item	Dia.
MT3875-032	1 ¼"
MT3875-038	1 ½"



Item	Length
MT4423-040	1 ⅝"



Item	Dia
MT3840-020	1 ⅜"



Item	Size
MT4382-025	1"
MT4382-035	1 ⅜"



Tayo knob with hammered top

Item	Dia.
MT3877-032	1 ¼"
MT3877-038	1 ½"



Item	Length
MT2234-035	1 ⅜"



Item	Dia.
MT3624-032	1 ¼"
MT3624-038	1 ½"



Item	Dia.
MT3950-032	1 ¼"
MT3950-038	1 ½"

## CABINET KNOBS



Item	Dia.
MT4549-032	1 1/4"



Item	Dia.
MT3990-032	1 1/4"
MT3990-038	1 1/2"



Item	Dia.
MT0117-032	1 1/4"
MT0117-038	1 1/2"



Item	Dia.
MT4648-032	1 1/4"



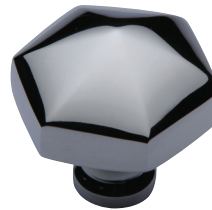
Item	Dia.
MT3985-032	1 1/4"
MT3985-038	1 1/2"



Item	Dia.
MT0113-032	1 1/4"
MT0113-038	1 1/2"



Item	Dia.
MT4547-032	1 1/4"



Item	Dia.
MT2238-032	1 1/4"



Item	Dia.
MT0974-032	1 1/4"



Item	Dia.
MT4545-032	1 1/4"



Item	Dia.
MT0118-032	1 1/4"
MT0118-038	1 1/2"



Item	Dia.
MT0973-032	1 1/4"

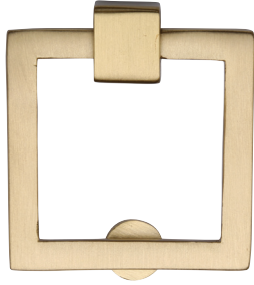


Item	Dia.
MT3975-040	1 5/8"



Item	Dia.
MT0114-032	1 1/4"
MT0114-038	1 1/2"

## DROP PULLS



Item	Size
MT6311-050	2" x 2"
MT6311-063	2 1/2" x 2 1/2"



Item	Dia.
MT6321-050	2"
MT6321-063	2 1/2"



Item	Size
MT6334-051	2 3/8"



Item	Size
MT6347-051	2 3/8"

## CUP PULLS



Item	Length	CTC
MT2700-057	3 1/4"	2 1/4"



Item	Length
MT1700-000	3 3/4"



Item	Length	CTC
MT2766-096	5 5/8"	3" or 3 3/4"
MT2766-152	8 3/4"	6" or 7"



Item	Length
MT2768-089	4 1/16"

## CABINET PULLS



Item	Length
MT4463-000	3 1/16"



Item	Length	CTC
MT4446-102	5 1/2"	4"
MT4446-152	7 1/2"	6"
MT4446-203	9 1/2"	8"
MT4446-254	11 1/2"	10"



Item	Length	CTC
MT4461-102	5"	4"
MT4461-152	7"	6"
MT4461-203	9"	8"
MT4461-254	11"	10"



Item	Length	CTC
MT4422-102	5 1/4"	4"
MT4422-152	7 1/4"	6"
MT4422-203	9 1/4"	8"
MT4422-254	11 1/4"	10"



Item	Length	CTC
MT4458-102	5 1/4"	4"
MT4458-152	7 1/4"	6"
MT4458-203	9 1/4"	8"
MT4458-254	11 1/4"	10"



Item	Length	CTC
MT4434-102	4 3/4"	4"
MT4434-152	6 3/4"	6"
MT4434-203	8 3/4"	8"
MT4434-254	10 3/4"	10"



Item	Length	CTC
MT4410-102	5 1/4"	4"
MT4410-152	7 1/4"	6"
MT4410-203	9 1/4"	8"
MT4410-254	11 1/4"	10"



Item	Length	CTC
MT4437-102	4 3/4"	4"
MT4437-152	6 3/4"	6"
MT4437-203	8 3/4"	8"
MT4437-254	10 3/4"	10"



## CABINET PULLS



Item	Length	CTC
MT4670-102	6 1/2"	4"
MT4670-152	8 1/2"	6"
MT4670-203	10 1/2"	8"
MT4670-254	12 1/2"	10"



Item	Length	CTC
MT0312-101	4 5/8"	4"
MT0312-152	6 5/8"	6"
MT0312-203	8 5/8"	8"
MT0312-254	10 5/8"	10"



Item	Length	CTC
MT3465-102	4 3/8"	4"
MT3465-152	6 3/8"	6"
MT3465-203	8 3/8"	8"
MT3465-254	10 3/8"	10"



Item	Length	CTC
MT0345-096	4 1/2"	3 3/4"
MT0345-152	6 3/4"	6"
MT0345-203	8 3/4"	8"



Item	Length	CTC
MT0337-096	4 1/2"	3 3/4"
MT0337-152	6 3/4"	6"
MT0337-203	8 3/4"	8"
MT0337-252	10 3/4"	10"



Item	Length	CTC
MT2232-096	4 3/8"	3 3/4"
MT2232-152	6 5/8"	6"
MT2232-203	8 5/8"	8"



Item	Length	CTC
MT4520-102	4 3/8"	4"
MT4520-152	6 1/4"	6"
MT4520-203	8 1/4"	8"



Item	Length	CTC
MT0334-096	4 1/2"	3 3/4"
MT0334-152	6 5/8"	6"
MT0334-203	8 5/8"	8"
MT0334-254	10 5/8"	10"

## CABINET PULLS



Item	Length	CTC
MT0361-102	6 1/2"	4"
MT0361-152	8 1/2"	6"
MT0361-203	10 1/2"	8"



Item	Length	CTC
MT1800-089	3 7/8"	3 1/2"
MT1800-152	6 3/8"	6"
MT1800-203	8 1/4"	8"



Item	Length	CTC
MT0376-096	5"	3 3/4"
MT0376-152	7 1/8"	6"
MT0376-203	9 1/8"	8"



Item	Length	CTC
MT7854-096	5 7/8"	3 3/4"
MT7854-152	7 7/8"	6"
MT7854-203	9 7/8"	8"



Item	Length	CTC
MT4370-096	4 3/4"	3 3/4"
MT4370-152	7"	6"
MT4370-203	9"	8"
MT4370-254	11"	10"



Item	Length	CTC
MT2155-089	3 3/4"	3 1/2"
MT2155-152	6 1/4"	6"



Item	Length	CTC
MT7210-076	3 7/8"	3"
MT7210-152	6 7/8"	6"
MT7210-203	9"	8"



Item	Length	CTC
MT1090-086	4 1/8"	3 3/8"
MT1090-132	6 1/8"	5 3/16"