



# CABINET HARDWARE

# CABINET KNOBS



**117 1/4" Round Knob**  
Diameter 1 1/4"  
Projection 1 1/8"



**117 1/2" Round Knob**  
Diameter 1 1/2"  
Projection 1 1/4"



**113 1/4" Round Knob  
on rose**  
Diameter 1 1/4"  
Projection 1 3/8"



**113 1/2" Round Knob  
on rose**  
Diameter 1 1/2"  
Projection 1 1/2"



**118 1/4" Egg Knob**  
Diameter 1 1/4"  
Projection 1"



**118 1/2" Egg Knob**  
Diameter 1 1/2"  
Projection 1 1/8"  
  
(See page 89 for  
larger egg knob)



**114 1/4" Egg Knob on rose**  
Diameter 1 1/4"  
Projection 1 1/4"



**114 1/2" Egg Knob on rose**  
Diameter 1 1/2"  
Projection 1 3/8"



**3990 1/4" Newport Knob**  
Diameter 1 1/4"  
Projection 1 1/8"



**3990 1/2" Newport Knob**  
Diameter 1 1/2"  
Projection 1 1/2"



**3880 1/4" Helios Knob**  
Diameter 1 1/4"  
Projection 1"



**3880 1/2" Helios Knob**  
Diameter 1 1/2"  
Projection 1"

# CABINET KNOBS



**3985 1 1/4" Bead Knob**  
Diameter 1 1/4"  
Projection 1 1/4"



**3985 1 1/2" Bead Knob**  
Diameter 1 1/2"  
Projection 1 3/8"



**391 Rose Knob**  
Diameter 1 5/8"  
Projection 1 3/8"



**394 Flower Knob**  
Diameter 1 3/8"  
Projection 1 3/8"



**3621 1 1/2" Opal Knob**  
Diameter 1 1/2" x 3/4"  
Projection 1 1/4"



**118 2" Large Egg Knob**  
Diameter 2" x 1 1/8"  
Projection 1 1/4"



**3980 1 1/4" Deco Knob\***  
1 1/4" x 1 1/4"  
Projection 1"



**3980 1 1/2" Deco Knob\***  
1 1/2" x 1 1/2"  
Projection 1"



**390 1 1/4" Pyramid Knob\***  
1 1/4" x 1 1/4"  
Projection 1 1/8"



**390 1 1/2" Pyramid Knob\***  
1 1/2" x 1 1/2"  
Projection 1 1/4"



**3625 1 1/4" Trapezoidal Knob\***  
1 1/4" x 1 1/4"  
Projection 1"



**3622 1 1/4" Craft Knob\***  
1 1/4" x 1 1/4"  
Projection 1"



**399 1 3/4" Twist Knob**  
Length 1 3/4"  
Projection 1 1/8"



**3896 Textured Knob\***  
Size 1 5/8" x 3/4"  
Projection 1"



**3920 Oblong Stone Knob**  
Size 2" x 1 1/8"  
Projection 1 1/8"



**3927 Round Stone Knob**  
Size 1 5/8" x 1 5/8"  
Projection 1 1/4"

\* Square knobs may not be used with backplates

# CABINET KNOBS



**3892 1 1/2" Cube Cup Pull\***  
1 1/2" x 7/8"  
Projection 7/8"



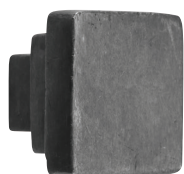
**3894 1" 'L' Knob\***  
1" x 1"  
Projection 3/4"



**3891 1 1/4" Wheel Knob**  
Diameter 1 1/4"  
Projection 1"



**3891 1 1/2" Wheel Knob**  
Diameter 1 1/2"  
Projection 1 1/4"



**3672 1 1/4" Square Step Knob\***  
1 1/4" x 1 1/4"  
Projection 1"



**3672 1 1/2" Square Step Knob\***  
1 1/2" x 1 1/2"  
Projection 1"



**3624 1 1/4" Round Step Knob**  
Diameter 1 1/4"  
Projection 1"



**3624 1 1/2" Round Step Knob**  
Diameter 1 1/2"  
Projection 1"



**3189 1 1/4" Round Cone Knob**  
Diameter 1 1/4"  
Projection 1 1/8"



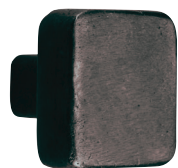
**3189 1 1/2" Round Cone Knob**  
Diameter 1 1/2"  
Projection 1 1/8"



**3191 1 1/4" Square Cone Knob\***  
Size 1 1/4" x 1 1/4"  
Projection 1 1/8"



**3191 1 1/2" Square Cone Knob\***  
Size 1 1/2" x 1 1/2"  
Projection 1 1/8"



**3674 1 1/4" Square Knob\***  
1 1/4" x 1 1/4"  
Projection 1"



**3674 1 1/2" Square Knob\***  
1 1/2" x 1 1/2"  
Projection 1"



**3895 1 1/4" 'T' Knob\***  
1 1/4" x 7/8"  
Projection 1"



**385 3/4" Stick Knob**  
Diameter 3/4"  
Projection 1 1/8"

\* Square knobs may not be used with backplates

# CABINET KNOB BACKPLATES



**CKB.SQ**  
2 1/2" x 1 1/2"



**CKB.SR**  
2 1/2" x 1 1/2"



**CKB.CV**  
2 1/2" x 1 1/2"



**CKB.OV**  
2 1/2" x 1 3/8"



**CKB.MS.1 1/2**  
1 1/2" x 1 1/2"



**CKB.MS.1 3/4**  
1 3/4" x 1 3/4"



**CKB.RD.1 1/2**  
Dia: 1 1/2"



**CKB.RD.1 3/4**  
Dia: 1 3/4"



**CKB.FS**  
5" x 1 1/2"



**CKB.FL**  
6 1/2" x 1 1/4"



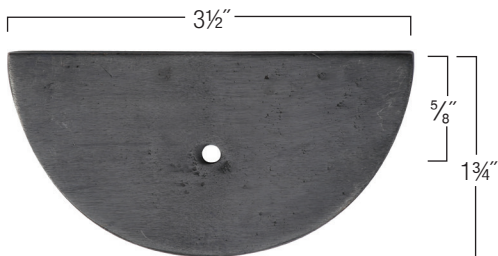
**CKB.FW**  
Dia: 1 1/2"



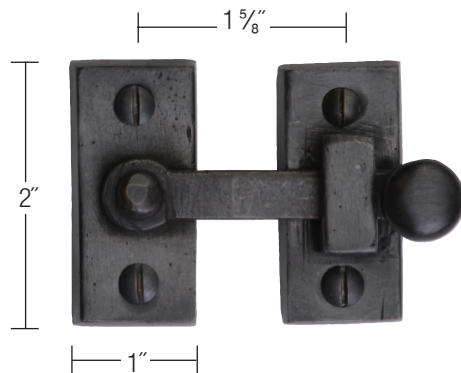
**CKB.RG**  
2 1/4" x 2 1/4"  
(length of side 1 5/8")



**CKB.ST**  
2 1/4" x 2 1/4"  
(length of side 1 5/8")



**CKB.CL**  
3 1/2" x 1 3/4"



**1257 Showcase Fastener**

# CABINET KNOB BACKPLATES

Our numerous backplates may be combined with most of our knobs to complement your home's decor. We have presented below some of the more popular combinations.



CKB.SQ plate shown with 117 1/2" knob in Light Bronze Patina



CKB.SQ plate shown with 118 1/2" knob in White Bronze Patina



CKB.SR plate shown with 117 1/4" knob in Dark Bronze Patina



CKB.SR plate shown with 118 1/4" knob in Light Bronze Patina



CKB.FL plate shown with 117 1/4" knob in White Bronze Patina



CKB.FL plate shown with 118 1/4" knob in Light Bronze Patina



CKB.FS plate shown with 117 1/2" knob in Light Bronze Patina



CKB.FS plate shown with 118 1/2" knob in Dark Bronze Patina



CKB.CL plate shown with 3880 1/2" knob in Dark Bronze Patina



CKB.OV plate shown with 118 1/4" knob in Dark Bronze Patina

# CABINET PULLS



## 1166 Ring pull

Shown in dark bronze patina

ITEM	SIZE	RING OUTSIDE DIA.	PROJECTION
1166	2" x 2 1/2"	1 1/4"	1/8"



## 119 Pull

Shown in light bronze patina

ITEM	SIZE	PROJECTION
119	3 1/8" x 7/8"	1 3/4"



## 115 Pull

Shown in dark bronze patina

ITEM	SIZE	PROJECTION
115	2 7/8" x 7/8"	1 5/8"



## 1700 Cup Pull

Shown in dark bronze patina

ITEM	SIZE	PROJECTION
1700	3 7/8" x 1 5/8"	3/4"



## 1710 Wide Cup Pull

Shown in dark bronze patina

ITEM	SIZE	PROJECTION
1710	6" x 1 7/8"	1 1/8"



## 1720 Industrial Bin Pull

Shown in light bronze patina

ITEM	CTC	SIZE	PROJECTION
1720.5 5/8"	3"	5 5/8" x 1 5/8"	1"
1720.8 5/8"	6"	8 5/8" x 1 5/8"	1"
1720.10 5/8"	8"	10 5/8" x 1 5/8"	1"

# CABINET PULLS



## 392 Pull

Shown in light bronze patina

ITEM	CTC	LENGTH	PROJECTION
392	96mm	5"	1 ¼"



## 373 Twig Pull

Shown in dark bronze patina

ITEM	CTC	LENGTH	PROJECTION
373	96mm	5"	1"



## 393 Pull

Shown in dark bronze patina

ITEM	CTC	SIZE	PROJECTION
393	96mm	5 ½" x ¾"	1 ⅛"



## 3343 Kali Pull

Shown in dark bronze patina

ITEM	CTC	LENGTH	PROJECTION
3343.5 ½	96mm	5 ½"	1 ½"
3343.7 ¾	6"	7 ¾"	1 ½"



## 357 Box Cup Pull

Shown in dark bronze patina

ITEM	CTC	LENGTH	WIDTH	PROJECTION
357.4	96mm	4 ¼"	7/8"	7/8"
357.6	5 ½"	6"	7/8"	7/8"
357.9	8 ½"	9"	7/8"	7/8"



# CABINET PULLS



## 396 Aztec Pull

Shown in light bronze patina

ITEM	CTC	LENGTH	WIDTH	PROJECTION
396.5 ¼	96mm	5 ¼"	5/8"	1 ¼"
396.7 ½	6"	7 ½"	5/8"	1 ¼"
396.9 ½	8"	9 ½"	5/8"	1 ¼"



## 1142 Pull

Shown in dark bronze patina

ITEM	LENGTH	PULL WIDTH	PROJECTION
1142.7	6 7/8"	¾"	1 ¾"
1142.9	9"	¾"	1 ¾"

Plate Width : 1 1/8"



## 376 Traditional Pull

Shown in dark bronze patina

ITEM	CTC	LENGTH	THICKNESS	PROJECTION
376.5	96mm	5"	3/8"	1 ¼"
376.7 ¼	6"	7 ¼"	3/8"	1 ¼"
376.9 ¼	8"	9 ¼"	3/8"	1 ¼"
376.11 ¼	10"	11 ¼"	3/8"	1 ¼"
376.13 ¼	12"	13 ¼"	3/8"	1 ¼"



## 1145 Pull

Shown in light bronze patina

ITEM	LENGTH	PULL WIDTH	PROJECTION
1145.6 ¼	6 ¼"	½"	1 ½"
1145.8 ¼	8 ¼"	½"	1 ½"
1145.10 ¼	10 ¼"	½"	1 ½"

Plate Width : 1"



## 3626 Pyramid Pull

Shown in dark bronze patina

ITEM	CTC	LENGTH	WIDTH	PROJECTION
3626.6 ¼	96mm	6 ¼"	1"	1 1/8"
3626.9	6 ½"	9"	1"	1 1/8"

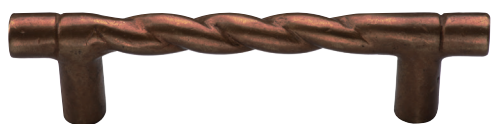
# CABINET PULLS



## 340 Tuscany Pull

Shown in light bronze patina

ITEM	CTC	LENGTH	THICKNESS	PROJECTION
340.4 ½	96mm	4 ½"	5/8"	1 5/8"
340.6 ¾	6"	6 ¾"	5/8"	1 5/8"
340.8 ¾	8"	8 ¾"	5/8"	1 5/8"
340.10 ¾	10"	10 ¾"	5/8"	1 5/8"



## 301 Rope Pull

Shown in light bronze patina

ITEM	CTC	LENGTH	THICKNESS	PROJECTION
301.5 ¼	96mm	5 ¼"	½"	1 3/8"
301.7 ½	5 ½"	7 ½"	½"	1 3/8"
301.9 ½	7"	9 ½"	½"	1 3/8"
301.11 ½	8 ½"	11 ½"	½"	1 3/8"



## 1092 Fleur-de-lis Pull

Shown in dark bronze patina

ITEM	LENGTH	WIDTH	PROJECTION
1092.4	4"	3/8"	1"
1092.6	6"	3/8"	1"
1092.8	8"	3/8"	1"
1092.10	10"	3/8"	1"



## 1090 Pull

Shown in dark bronze patina

ITEM	LENGTH	WIDTH	PROJECTION
1090.4	4"	3/8"	1"
1090.6	6"	3/8"	1 ¼"
1090.8	8"	3/8"	1 3/8"
1090.10	10"	3/8"	1 3/8"



## 370 Twist Pull

Shown in light bronze patina

ITEM	LENGTH	THICKNESS	PROJECTION
370.5 5/8	5 5/8"	3/8"	1 1/8"
370.8	8"	3/8"	1 1/8"
370.10	10"	3/8"	1 1/8"

# CABINET PULLS



## 3402 Arc Pull

Shown in light bronze patina

ITEM	CTC	LENGTH	WIDTH	PROJECTION
3402.4 $\frac{5}{8}$ "	96mm	4 $\frac{5}{8}$ "	$\frac{3}{4}$ "	1 $\frac{1}{8}$ "
3402.6 $\frac{3}{4}$ "	6"	6 $\frac{3}{4}$ "	$\frac{3}{4}$ "	1 $\frac{1}{8}$ "
3402.8 $\frac{3}{4}$ "	8"	8 $\frac{3}{4}$ "	$\frac{3}{4}$ "	1 $\frac{1}{8}$ "
3402.10 $\frac{3}{4}$ "	10"	10 $\frac{3}{4}$ "	$\frac{3}{4}$ "	1 $\frac{1}{8}$ "



## 3334 Deco Pull

Shown in light bronze patina

ITEM	CTC	LENGTH	WIDTH	PROJECTION
3334.4 $\frac{3}{8}$ "	96mm	4 $\frac{3}{8}$ "	1"	1 $\frac{1}{4}$ "
3334.6 $\frac{5}{8}$ "	6"	6 $\frac{5}{8}$ "	1"	1 $\frac{1}{4}$ "
3334.8 $\frac{5}{8}$ "	8"	8 $\frac{5}{8}$ "	1"	1 $\frac{1}{4}$ "
3334.10 $\frac{5}{8}$ "	10"	10 $\frac{5}{8}$ "	1"	1 $\frac{1}{4}$ "



## 3378 Avon Pull

Shown in dark bronze patina

ITEM	LENGTH	WIDTH	PROJECTION
3378.6	6"	$\frac{3}{8}$ "	1 $\frac{1}{4}$ "
3378.8	8"	$\frac{3}{8}$ "	1 $\frac{1}{4}$ "
3378.10	10"	$\frac{3}{8}$ "	1 $\frac{1}{4}$ "

Foot Size: 1  $\frac{1}{8}$ " x 1"



## 3476 Metro Pull

Shown in light bronze patina

ITEM	CTC	LENGTH	WIDTH	PROJECTION
3476.4 $\frac{1}{8}$ "	96mm	4 $\frac{1}{8}$ "	$\frac{3}{4}$ "	1 $\frac{1}{8}$ "
3476.6 $\frac{3}{8}$ "	6"	6 $\frac{3}{8}$ "	$\frac{3}{4}$ "	1 $\frac{1}{8}$ "
3476.8 $\frac{3}{8}$ "	8"	8 $\frac{3}{8}$ "	$\frac{3}{4}$ "	1 $\frac{1}{8}$ "
3476.10 $\frac{3}{8}$ "	10"	10 $\frac{3}{8}$ "	$\frac{3}{4}$ "	1 $\frac{1}{8}$ "



## 3721 Durham Pull

Shown in light bronze patina

ITEM	CTC	LENGTH	WIDTH	PROJECTION
3721.4 $\frac{7}{8}$ "	96mm	4 $\frac{7}{8}$ "	$\frac{5}{8}$ "	1 $\frac{1}{4}$ "
3721.7 $\frac{1}{8}$ "	6"	7 $\frac{1}{8}$ "	$\frac{5}{8}$ "	1 $\frac{1}{4}$ "
3721.9 $\frac{1}{8}$ "	8"	9 $\frac{1}{8}$ "	$\frac{5}{8}$ "	1 $\frac{1}{4}$ "
3721.11 $\frac{1}{8}$ "	10"	11 $\frac{1}{8}$ "	$\frac{5}{8}$ "	1 $\frac{1}{4}$ "

# CABINET PULLS



## 341 Pull

Shown in dark bronze patina

ITEM	CTC	LENGTH	WIDTH	PROJECTION
341.4 ¼	96mm	4 ¼"	¾"	1 ¼"
341.6 ½	6"	6 ½"	¾"	1 ¼"
341.8 ½	8"	8 ½"	¾"	1 ¼"
341.10 ½	10"	10 ½"	¾"	1 ¼"



## 361 Straight Pull

Shown in light bronze patina

ITEM	CTC	LENGTH	WIDTH	PROJECTION
361.5 ¼	96mm	5 ¼"	½"	1 ⅜"
361.7 ½	5 ½"	7 ½"	½"	1 ⅜"
361.9 ½	7"	9 ½"	½"	1 ⅜"
361.11 ½	8 ½"	11 ½"	½"	1 ⅜"



## 351 Tapered Pull

Shown in dark bronze patina

ITEM	CTC	LENGTH	WIDTH	PROJECTION
351.5 ¼	96mm	5 ¼"	½"	1 ⅜"
351.7 ½	5 ½"	7 ½"	½"	1 ⅜"
351.9 ½	7"	9 ½"	½"	1 ⅜"
351.11 ½	8 ½"	11 ½"	½"	1 ⅜"



## 371 Hex Pull

Shown in dark bronze patina

ITEM	CTC	LENGTH	WIDTH	PROJECTION
371.5	96mm	4 ⅞"	½"	1 ⅜"
371.7 ½	5 ½"	7 ½"	½"	1 ⅜"
371.9 ½	7"	9 ½"	½"	1 ⅜"
371.11 ½	8 ½"	11 ½"	½"	1 ⅜"



## 331 'D' Pull

Shown in white bronze patina

ITEM	CTC	LENGTH	WIDTH	PROJECTION
331.4 ¼	96mm	4 ¼"	½"	1 ⅜"
331.6 ½	6"	6 ½"	½"	1 ⅜"
331.8 ½	8"	8 ½"	½"	1 ⅜"
331.10 ½	10"	10 ½"	½"	1 ⅜"

# CABINET PULLS



## 3384 Surface Mounted Lip Pull

ITEM	LENGTH	HEIGHT	PROJECTION
3384.1 1/2	1 1/2"	3/4"	1 1/8"
3384.3	3"	3/4"	1 1/8"
3384.6	6"	3/4"	1 1/8"



## 3383 Urban Offset Pull

ITEM	CTC	LENGTH	WIDTH	PROJECTION
3383.4 3/8	96mm	4 3/8"	5/8"	1 1/8"
3383.6 5/8	6"	6 5/8"	5/8"	1 1/8"
3383.8 5/8	8"	8 5/8"	5/8"	1 1/8"
3383.10 5/8	10"	10 5/8"	5/8"	1 1/8"



## 3422 Arc Offset Pull

ITEM	CTC	LENGTH	WIDTH	PROJECTION
3422.4 3/8	96mm	4 3/8"	5/8"	1 1/8"
3422.6 5/8	6"	6 5/8"	5/8"	1 1/8"
3422.8 5/8	8"	8 5/8"	5/8"	1 1/8"
3422.10 5/8	10"	10 5/8"	5/8"	1 1/8"



## 3465 Angular Pull

ITEM	CTC	LENGTH	WIDTH	PROJECTION
3465.4 1/4	96mm	4 1/4"	1/2"	1 1/4"
3465.6 3/8	6"	6 3/8"	1/2"	1 1/4"
3465.8 3/8	8"	8 3/8"	1/2"	1 1/4"
3465.10 3/8	10"	10 3/8"	1/2"	1 1/4"



## 3430 Bar Pull

ITEM	CTC	LENGTH	DIA	PROJECTION
3430.5 3/4	96mm	5 3/4"	1/2"	1 1/4"
3430.8 1/8	6"	8 1/8"	1/2"	1 1/4"
3430.10 1/8	8"	10 1/8"	1/2"	1 1/4"
3430.12 1/8	10"	12 1/8"	1/2"	1 1/4"



## 3480 Linear Pull

ITEM	CTC	LENGTH	WIDTH	PROJECTION
3480.4 1/8	96mm	4 1/8"	5/8"	1 1/4"
3480.6 3/8	6"	6 3/8"	5/8"	1 1/4"
3480.8 3/8	8"	8 3/8"	5/8"	1 1/4"
3480.10 3/8	10"	10 3/8"	5/8"	1 1/4"

# CABINET PULLS



## 3312 Bauhaus Pull

ITEM	CTC	LENGTH	WIDTH	PROJECTION
3312.4 $\frac{3}{8}$ "	96mm	4 $\frac{3}{8}$ "	$\frac{5}{8}$ "	1 $\frac{3}{8}$ "
3312.6 $\frac{5}{8}$ "	6"	6 $\frac{5}{8}$ "	$\frac{5}{8}$ "	1 $\frac{3}{8}$ "
3312.8 $\frac{5}{8}$ "	8"	8 $\frac{5}{8}$ "	$\frac{5}{8}$ "	1 $\frac{3}{8}$ "
3312.10 $\frac{5}{8}$ "	10"	10 $\frac{5}{8}$ "	$\frac{5}{8}$ "	1 $\frac{3}{8}$ "



## 345 Apollo Pull

ITEM	CTC	LENGTH	WIDTH	PROJECTION
345.4 $\frac{1}{2}$ "	96mm	4 $\frac{1}{2}$ "	$\frac{3}{8}$ "	1 $\frac{3}{8}$ "
345.6 $\frac{3}{4}$ "	6"	6 $\frac{3}{4}$ "	$\frac{3}{8}$ "	1 $\frac{3}{8}$ "
345.8 $\frac{3}{4}$ "	8"	8 $\frac{3}{4}$ "	$\frac{3}{8}$ "	1 $\frac{3}{8}$ "
345.10 $\frac{3}{4}$ "	10"	10 $\frac{3}{4}$ "	$\frac{3}{8}$ "	1 $\frac{3}{8}$ "
345.12 $\frac{3}{4}$ "	12"	12 $\frac{3}{4}$ "	$\frac{3}{8}$ "	1 $\frac{3}{8}$ "



## 337 Urban Pull

ITEM	CTC	LENGTH	WIDTH	PROJECTION
337.4 $\frac{1}{2}$ "	96mm	4 $\frac{1}{2}$ "	$\frac{3}{8}$ "	1 $\frac{1}{8}$ "
337.6 $\frac{3}{4}$ "	6"	6 $\frac{3}{4}$ "	$\frac{3}{8}$ "	1 $\frac{1}{8}$ "
337.8 $\frac{3}{4}$ "	8"	8 $\frac{3}{4}$ "	$\frac{3}{8}$ "	1 $\frac{1}{8}$ "
337.10 $\frac{3}{4}$ "	10"	10 $\frac{3}{4}$ "	$\frac{3}{8}$ "	1 $\frac{1}{8}$ "
337.12 $\frac{3}{4}$ "	12"	12 $\frac{3}{4}$ "	$\frac{3}{8}$ "	1 $\frac{1}{8}$ "



## 338 Wide Urban Pull

ITEM	CTC	LENGTH	WIDTH	PROJECTION
338.4 $\frac{1}{8}$ "	96mm	4 $\frac{1}{8}$ "	$\frac{3}{4}$ "	1 $\frac{1}{8}$ "
338.6 $\frac{3}{8}$ "	6"	6 $\frac{3}{8}$ "	$\frac{3}{4}$ "	1 $\frac{1}{8}$ "
338.8 $\frac{3}{8}$ "	8"	8 $\frac{3}{8}$ "	$\frac{3}{4}$ "	1 $\frac{1}{8}$ "
338.10 $\frac{3}{8}$ "	10"	10 $\frac{3}{8}$ "	$\frac{3}{4}$ "	1 $\frac{1}{8}$ "



## 347 'L' Pull

ITEM	CTC	LENGTH	WIDTH	PROJECTION
347.4 $\frac{1}{2}$ "	96mm	4 $\frac{1}{2}$ "	1 $\frac{1}{8}$ "	$\frac{7}{8}$ "
347.6 $\frac{3}{4}$ "	6"	6 $\frac{3}{4}$ "	1 $\frac{1}{8}$ "	$\frac{7}{8}$ "
347.8 $\frac{3}{4}$ "	8"	8 $\frac{3}{4}$ "	1 $\frac{1}{8}$ "	$\frac{7}{8}$ "
347.10 $\frac{3}{4}$ "	10"	10 $\frac{3}{4}$ "	1 $\frac{1}{8}$ "	$\frac{7}{8}$ "

# CABINET PULLS



## 3425 Textured Pull

Shown in light bronze patina

ITEM	CTC	LENGTH	WIDTH	PROJECTION
3425.5 ¾	96mm	5 ¾"	⅝"	1 ⅛"
3425.8 ⅛	6"	8"	⅝"	1 ⅛"
3425.10 ⅛	8"	10"	⅝"	1 ⅛"
3425.12 ⅛	10"	12"	⅝"	1 ⅛"



## 3363 Axiom Pull

Shown in light bronze patina

ITEM	CTC	LENGTH	WIDTH	PROJECTION
3363.4 ¼	96mm	4 ¼"	½"	1 ¼"
3363.6 ½	6"	6 ½"	½"	1 ¼"
3363.8 ½	8"	8 ½"	½"	1 ¼"
3363.10 ½	10"	10 ½"	½"	1 ¼"



## 317 'T' Pull

Shown in dark bronze patina

ITEM	CTC	LENGTH	WIDTH	PROJECTION
317.4 ½	96mm	4 ½"	⅝"	1 ¼"
317.6 ¾	6"	6 ¾"	⅝"	1 ¼"
317.8 ¾	8"	8 ¾"	⅝"	1 ¼"
317.10 ¾	10"	10 ¾"	⅝"	1 ¼"



## 3348 Claros Pull

Shown in light bronze patina

ITEM	CTC	LENGTH	WIDTH	PROJECTION
3348.4 ¼	96mm	4 ¼"	¼"	1 ⅜"
3348.6 ½	6"	6 ½"	¼"	1 ⅜"
3348.8 ½	8"	8 ½"	¼"	1 ⅜"
3348.10 ½	10"	10 ½"	¼"	1 ⅜"



## 3325 Artisanal Pull

Shown in dark bronze patina

ITEM	CTC	LENGTH	WIDTH	PROJECTION
3325.4 ½	96mm	4 ½"	½"	1 ½"
3325.6 ¾	6"	6 ¾"	½"	1 ½"
3325.8 ¾	8"	8 ¾"	½"	1 ½"
3325.10 ¾	10"	10 ¾"	½"	1 ½"

# CABINET PULL BACKPLATES



ITEM	SIZE	PULL CTC
CPB.PL96	5 1/2" x 1 1/8"	96mm
CPB.PL140	7 1/2" x 1 1/8"	5 1/2"
CPB.PL152	7 1/2" x 1 1/8"	6"



ITEM	SIZE	PULL CTC
CPB.SP96	5 1/2" x 1 1/8"	96mm
CPB.SP140	7 1/2" x 1 1/8"	5 1/2"
CPB.SP152	7 1/2" x 1 1/8"	6"



ITEM	SIZE	PULL CTC
CPB.CV96	5 1/2" x 1 1/8"	96mm
CPB.CV140	7 1/2" x 1 1/8"	5 1/2"
CPB.CV152	7 1/2" x 1 1/8"	6"



ITEM	SIZE	PULL CTC
CPB.CL96	6 5/8" x 2 1/8"	96mm



ITEM	SIZE	PULL CTC
CPB.TL96	5 5/8" x 2 1/8"	96mm

CABINET PULL BACKPLATES



# DROP PULLS



**6369 Drop Pull**

Tip to tip 2 1/4" x 2 1/4"  
Length of side 1 5/8"  
Ring dia: 1 5/8", Projection: 1"



**6331 Drop Pull**

Tip to tip 2 1/4" x 2 1/4"  
Length of side 1 5/8"  
Ring dia: 1 5/8", Projection: 1"



**6361 Drop Pull**

Shown in dark bronze patina  
Ring diameter: 1 5/8"  
Projection: 3/4"



**6265 Drop Pull**

Shown in light bronze patina  
3 1/2" x 1 5/8"  
Projection: 1/2"



**6351 Oblong Drop Pull**

Shown in dark bronze patina  
2 1/4" x 1 1/4"  
Projection: 3/4"



**6355 Square Drop Pull**

Shown in dark bronze patina  
1 1/2" x 1 1/2"  
Projection: 3/4"



**6356 Square Drop Pull**

Shown in light bronze patina  
2 1/2" x 2 1/2"  
Projection: 7/8"



**6367 Drop Pull**

Shown in dark bronze patina  
Backplate: 2" x 2 1/2", Ring dia: 2"  
Projection: 1"



**6359 Square Drop Pull**

Shown in light bronze patina  
1 3/4" x 1 3/4"  
Projection: 7/8"



**6301 Drop Pull**

Shown in dark bronze patina  
Backplate: 3" x 1 3/4", Ring dia: 2"  
Projection: 1"

# DROP PULLS



## 6261 Drop Pull

Backplate tip to tip 2 1/4" x 2 1/4"  
Length of side 1 5/8"  
Drop length: 2 3/8", Projection: 1"



## 6263 Drop Pull

Shown in dark bronze patina  
Backplate: 3 1/8" x 1 3/8"  
Drop length: 2 3/8", Projection: 1"



## 6264 Drop Pull

Shown in dark bronze patina  
Backplate diameter: 1 3/4"  
Drop length: 2 1/4", Projection: 7/8"



## 6270 Drop Pull

Shown in dark bronze patina  
Backplate: 3/4" x 7/8"  
Drop length: 2", Projection: 7/8"



## 6272 Angled Drop Pull

Shown in light bronze patina

ITEM	CTC	PROJECTION
6272.4	96mm	1 1/8"
6272.5 1/2	5 1/2"	1 1/8"



## 6269 Twist Drop Pull

Shown in dark bronze patina

ITEM	CTC	PROJECTION
6269.4	96mm	1"
6269.5 1/2	5 1/2"	1"



## 6267 Tuscany Drop Pull

Shown in dark bronze patina

ITEM	CTC	PROJECTION
6267.4	96mm	3/4"
6267.5 1/2	5 1/2"	3/4"



## 6266 Drop Pull

Shown in dark bronze patina

ITEM	CTC	SIZE	PROJECTION
6266	2 1/2"	3 3/4" x 1 7/8"	7/8"